

SkyTag FLEX - Ruggedized Satellite GPS Tracking – Near Global Coverage



Extending Asset Visibility Range Far Beyond Cellular

The SkyTag FLEX is the smallest, most cost-effective, multi-year, battery powered satellite tracking tag available today, representing a break-through in GPS asset tracking, RFID tag and monitoring solutions. Available with an unprecedented three-year warranty, this ruggedized device is designed to withstand harsh environmental extremes, and has been awarded the highest certifications available today in a tracking device.



Asset Tracking - Intelligent Remote Monitoring

The SkyTag FLEX represents a breakthrough in satellite-based asset monitoring and tracking technology. Operating on Globalstar's Low Earth Orbit (LEO) simplex satellite data network, the SkyTag FLEX provides GPS visibility, event monitoring and remote asset data on a near global basis. Ideal for low volume messaging the SkyTag FLEX provides commercial and government customers with the most cost-effective satellite solution available.

Self-Contained

- Multi Year Battery (up to 3000 messages)
- GPS with Antenna
- Satellite Transmitter with Antenna
- Magnet Switch On/Off /Alarm
- Serial USB port
- Internal Motion Sensor
- Timed, Motion, Threshold Updates

Compatible Tracking Software

- FleetLinc Web Based Management
- POWER-trak3 PC/Desktop/Cloud/Web
- Your Software Choice Using API
- Third Party Market Specific, e.g. 911, CAD

Small, Compact, Rugged Design

- 3.5 x 4.0 x 2.0 inch
- 14 ounces

Safety Approval

- U.S. UL 60950, U.S. UL 913, Class 1, Division 1 (Groups A, B, C, D),
- Intrinsic Safe Operation

Benefits

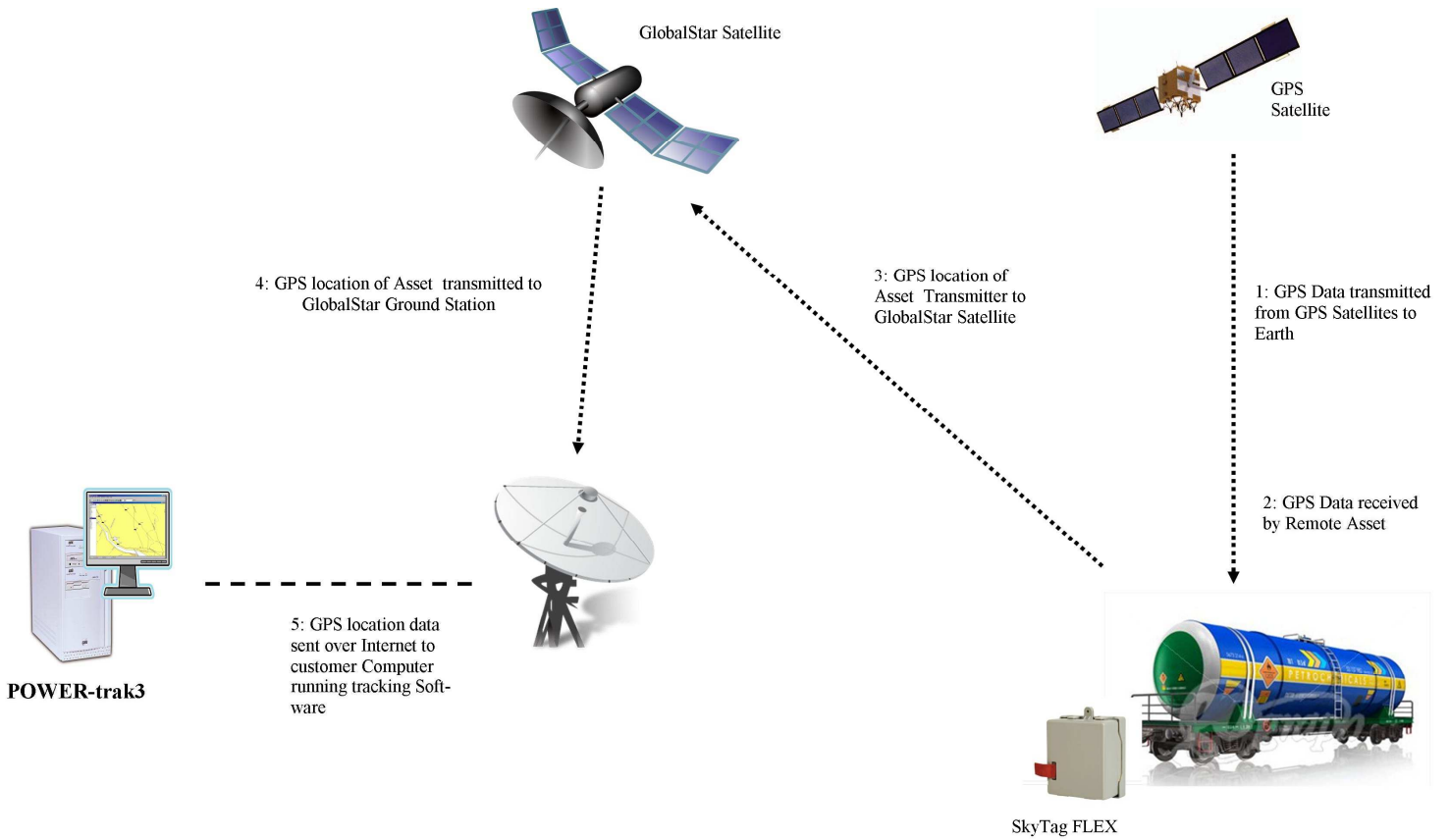
- Obtain Visibility of Equipment
- Prevent Theft & Reduce costs
- Improved Planning
- Improved Asset Utilization
- Peace of Mind
- Location Audit Reports, Relay Maps

Applications

- Containers
- Rail Road Cars
- Remote Power Generators
- Construction Equipment
- Frac Tanks
- Baskets+Roll-Off Boxes
- Screen & Sand Boxes
- Gas Busters
- Skimmers
- Beachcombers
- IBCs
- Acid Tanks

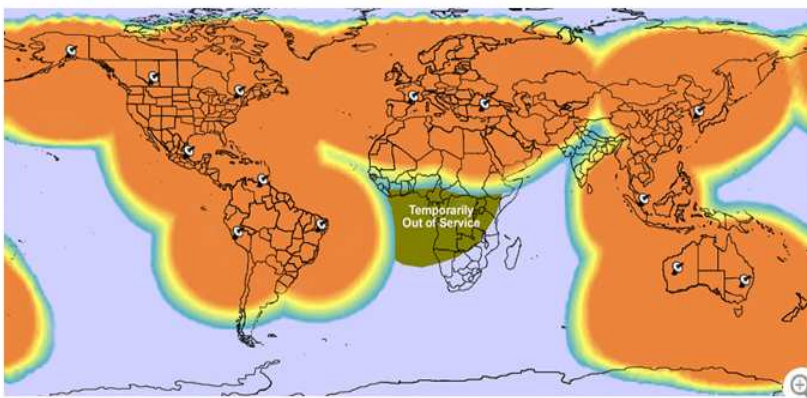


GPS Wireless Technologies LLC
Tel: 321-300-1781 ext 524 Fax: 321-300-2056
sales@GPSWirelessTechnologies.com



© CES Wireless Technologies Corp 2012

GlobalStar Satellite Coverage



Simplex Modem Data Coverage: Completion rates based on SkyTag units that are set to transmit a single packet message 3-times (the original transmission plus 2-repeats) in the frequency appropriate for the given regions. This is an estimate of coverage only. Actual Remote Telemetry coverage may vary based on terminal location, terrain features, signal strength and other factors affecting satellite communications.

- Globalstar Gateway
- Primary Globalstar Service Area (100-98% completion rate*)
- Extended Globalstar Service Area (98-90% completion rate*)
- Fringe Globalstar Service Area (80-90% completion rate*)

*Completion rates based on Remote Telemetry Units (RTU) that are set to transmit a single packet message 3-times (the original transmission plus 2-repeats) in the frequency appropriate for the given regions. This is an estimate of coverage only. Actual Remote Telemetry coverage may vary based on terminal location, terrain features, signal strength and other factors affecting satellite communications. Coverage may vary. Specifications subject to change without notice.

Update on July 04, 2012



SkyTag FLEX - Ruggedized Satellite GPS Tag – Near Global Coverage

Asset Tracking - Intelligent Remote Monitoring

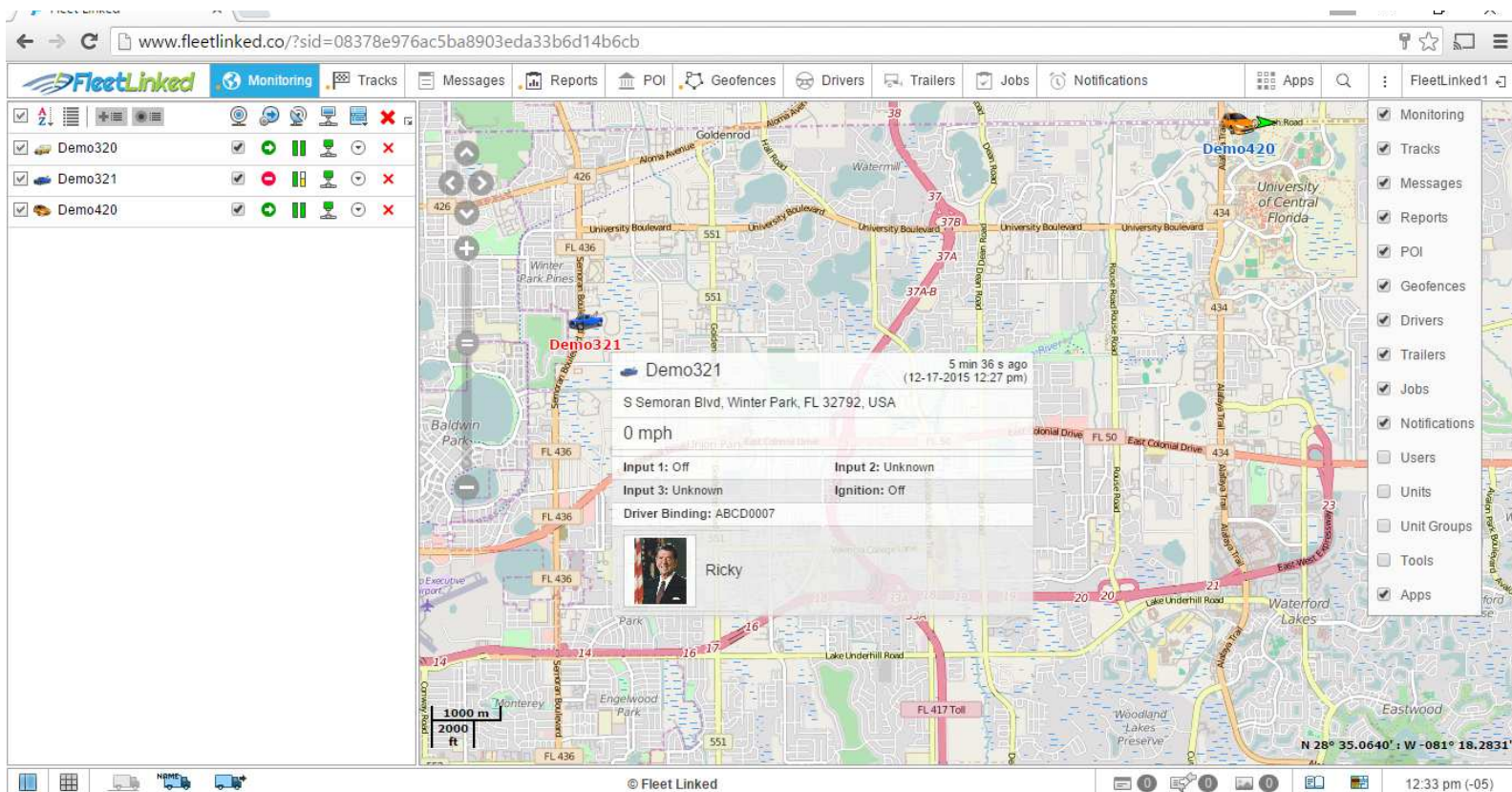
The need for periodic location information on supply chain, remote assets, security and systems, fixed or mobile assets, intermodal shipping containers, trailers, generators, construction equipment, buoys and barges does not end where cellular coverage does.

The FLEX communicates data via the Globalstar Simplex Data Service. This satellite service utilizes low power, one-way transmitters to relay data from locations globally to a back office server accessible over the internet through secure connection. The use of one-way, simplex satellite communications is a proven, reliable method to inexpensively collect data from widely scattered assets. The device is “speak” only, so there is no way to communicate to the device in the field. This feature is mitigated by a rich configuration capability that enables the FLEX to automatically detect situations where a data update is desired, such as start and stop or while in motion.

The device is 3.5 inches wide, 4.0 inches long and 2.0 inch in height. The enclosure is ultra-violet resistant and designed to survive physical and temperature shock. The battery is field replaceable. The FLEX only need be snapped out of its mounting sled to replace the battery.

Go from out-of-the-box to tracking in minutes. CES battery powered trackers are simple to install and activate, and have secure and flexible mounting options including VHB (very high bond) tape and screw down.

FleetLinked Web Tracking



GPS Wireless Technologies LLC
Tel: 321-300-1781 ext 524 Fax: 321-300-2056
sales@GPSWirelessTechnologies.com

SkyTag FLEX - Ruggedized Satellite GPS Tracking – Near Global Coverage

PROGRAMMING

FLEX Wireless Programming

Standard, Triggering, Motion and Testing Mode

Your SX1 FLEX will be factory pre-configured at the point of manufacturing.

A separate wireless programmer is also available.

PHYSICAL

Dimensions

3.9" x 3.25" x 2"

Weight

14 ounces

APPROVALS

Radiated Emissions

FCC Part 15 and 25 verified transmitter, Industry Canada, COFETEL, CE Notified

Safety Approval

U.S. UL 60950, U.S. UL 913, Class 1, Division 1 (Groups A, B, C, D), INTRINSIC SAFE OPERATION

Temperature

-20 to 85 C

Humidity

95% at 50 C

Vibration & Shock

SAE J1455

Type

Waterproof sonically welded enclosure

TRANSMITTER

Frequency

1611.25 to 1618.75 MHz

Protocol

Simplex

Modulation

Direct Sequence Spread Spectrum (DSSS)

Max TX Power

22dBm EIRP

Max TX Time

1.4 Seconds/9 bytes

Antenna

Dual Mode (Satellite--GPS)

Packet Time

9 Bytes



UNIT IDENTIFICATION

ESN

Each unit uniquely serialized

COMMUNICATIONS

Programming Interface

USB HID Device, T-Wire

Motion

Internal

Integrated

Dry Contact

POWER

Battery

Internal, Ultrasonically Welded Lithium Pack - Primary 3200mAh 6V DC

Battery Life

Up to 3000 messages

Replacement:

Field replaceable without device removal from asset

Mounting Options

Programming Tools and Cables, Mounting, sensor Cables, Line cables, Security Screw and Tools